



# One-stop Solution SMART DEVICE

We offer highly specific all in one solution which can't be satisfied by existing devices on the market.

Android

Windows

Linux

# Interactive IoT Tablets

- PoE Wall-mount Tablet
- Wall-mount Gateway Tablet
- Cellular Smart Gateway Hub
- Docked Smart Home Control Tablet
- Wall-mount Door Control Tablet

## Home Automation Control Panel

Android      POE      RS485



## Car Infotainment

- Auto Repair Shop Tablet
- Android Navigation Tablet
- Rear Seat Entertainment Tablet

## Car Ads Player

Navigator      Payment terminal      for car-hailing

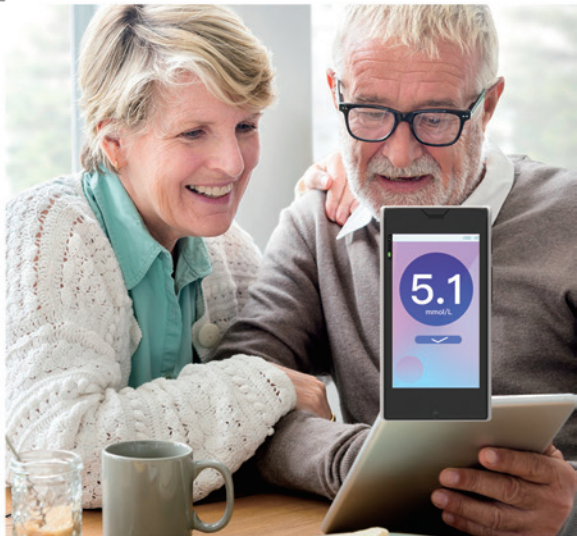


## Tablet-Based Healthcare

- Skin Analysis Tablet
- Mini Glucose Meter Phone
- Senior Care Tablet
- Kids Care Gaming Tablet
- Hospital Tablet

## Mini Size Device

- 3-inch screen
- USB-C x 2
- LTE connection



# Open Frame Embedded

- Coffee Machine Screen
- Smart Cooker Screen
- Vending Machine Panel
- E-bike Screen
- Fitness Equipment Display

## Tablet-Enabled Appliances

- No battery
- Serial port
- MDM software



## POS Solution

- Bank Operator Tablet
- Signature Tablet with Stylus
- Feedback Tablet
- Handheld Android POS

## Tablet-Based POS

- Android touch to pay
- Restaurant and Shops



# Tablet-Driven Learning

- Student Tablet With Active Stylus Pen
- Classroom Tablet With Charging Cabinet

## Classroom Learning

- Active stylus
- Charging rank





# Encrypted Smartphone

6.26" 4G Security & Privacy Focused



## SBC

### RK3588

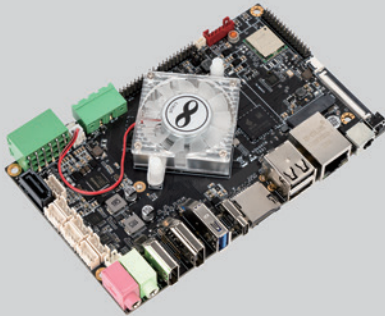
4 x Cortex-A76 + 4 x  
Cortex-A55 2.4GHz  
6.0TOPS NPU, Support  
INT4/INT8/INT16

### RK3568

4 x Cortex-A55, 2.0G, 22nm  
ARM G52 2EE, 0.8 TOPS NPU

### RK3566

4 x Cortex-A55, 1.8G, 22nm  
ARM G52 2EE, 0.8 TOPS NPU



## SoM + Carrier Board

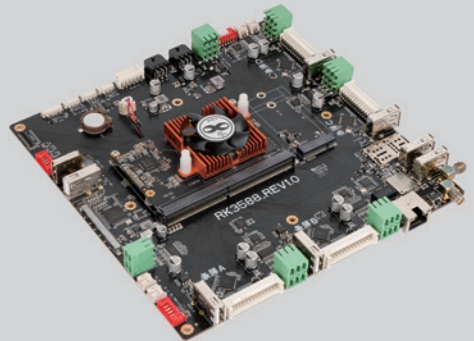
### RK3588

4 x Cortex-A76 + 4 x  
Cortex-A55 2.4GHz  
6.0TOPS NPU, Support  
INT4/INT8/INT16



### RK3566

4 x Cortex-A55, 1.8G, 22nm  
ARM G52 2EE, 0.8 TOPS NPU



Turnkey Solution Provider



## AIOT SMART DISPLAY



## Who is Pretech for?

We offer highly specific all in one solution which can't be satisfied by existing devices on the market.

## ODM Design Manufacturing Solutions

Pretech has developed Android / Windows / Linux based smart terminals with LTE, WI-FI, Bluetooth, Zigbee, ZWave, NFC, 3D TOF camera and various interfaces for smart terminals with LTE, WI-FI, Bluetooth, Zigbee, ZWave, NFC, 3D TOF camera and various interfaces for smart home automation, smart security application fields, in-vehicle infotainment system, car diagnostic system, sports equipment, healthcare information system, smart appliances, smart advertisement industry, simplified smart payment system, easy-to-use educational projects and numerous other application fields with smart interactive display needs. Pretech is deeply focusing on Hardware and OS research and development and we have helped lots of clients build their own smart terminals. Our products are CE, FCC, ROHS and Reach certified.

## ODM Service Overview

### Tooling



ID  
MD  
Injection moulding

### Hardware Development



Schematic  
Stackup  
Layout  
PCB sampling & SMT  
HW debug

### Software Customization



OS  
Driver  
App implement

### Accessories Customization



Protection cover/case  
Charging station/cabinet  
Active stylus  
All kinds of cable/adaptor  
...



D-V88-RCL

**RK3588**

4 x Cortex-A76 + 4 x Cortex-A55 2.4GHz  
8nm 6.0TOPS NPU  
Support INT4/INT8/INT16



D-SOM88

**RK3588**

4 x Cortex-A76 + 4 x Cortex-A55 2.4GHz  
8nm 6.0TOPS NPU  
Support INT4/INT8/INT16



D-SOM66

**RK3566**

4 x Cortex-A55 1.8G  
22nm ARM G52 2EE  
0.8 TOPS NPU

SOC	RK3588 4 x Cortex-A76 + 4 x Cortex-A55 2.4GHz 8nm 6.0TOPS NPU Support INT4/INT8/INT16	RK3588 4 x Cortex-A76 + 4 x Cortex-A55 2.4GHz 8nm 6.0TOPS NPU Support INT4/INT8/INT16	RK3566 4 x Cortex-A55 1.8G 22nm ARM G52 2EE 0.8 TOPS NPU
OS	Android	Android	Android
RAM	LPDDR4 4GB/8GB/16GB/32GB	LPDDR4 4GB/8GB/16GB/32GB	LPDDR4 2G/4G/8G/8G
ROM	EMMC5.1 64G/128G	EMMC5.1 64G/128G	EMMC5.1 32G/64G/128G
Media	Video decoding: 8K@60fps H.265/VP9/AVS2 8K@30fps H.264 AVC/MVC 4K@60fps AV1	Video decoding: 8K@60fps H.265/VP9/AVS2 8K@30fps H.264 AVC/MVC 4K@60fps AV1	4K 60fps H.265/H.264/VP9 decode 1080P 100fps H.265/H.264 codec
Display	Standard HDMI out Port, HDMI2.1 up to 8K@60Hz Standard HDMI in Port, HDMI 2.0 RX PHY, 4-lanes up to 4K@60Hz eDP1.3 4Lane, 4K@60Hz Dual-LVDS Port, 1080P@60Hz 6-Lane MIPI-DSI LCD interface Type e-CP out, DP1.4 output	Supports up to 5 screens with different displays, tactile sensations and sounds. HDMI2.1 out or HDMI convert to VbyOne 4K@60fps DP1.4 convert to Dual-LVDS 1080@60fps DP1.4 convert to Dual-LVDS 1080@60fps 4-Lane MIPI-DSI convert to Dual-LVDS 1080@60fps 4-Lane MIPI-DSI convert to Dual-LVDS 1080@60fps	HDMI2.0 port (4K@60)
Ethernet	RJ45 Gigabit Ethernet interface, supporting external POE module	Ethernet interface x 1	/
Connectivity	WiFi6 802.11a/b/g/n/ac/ax, 2T2R	WiFi6 802.11a/b/g/n/ac/ax, Bluetooth5.0, 2T2R	WiFi6 802.11a/b/g/n/ac, Bluetooth5.0
USB Port	USB Type C x 1 (OTG, DP output support) USB Type A 2.0 x 2 USB Type A 3.0 x 1 USB 2.0 x 2 4Pin-PH1.25	USB2.0 x 5 for USB-TP USB2.0 (with OTG) x 1 for update USB2.0 x 1 for 4G module USB2.0 x 3 host	USB3.0 x 1 (with OTG)
Micro SD	Micro SD card up to 128GB	/	Micro SD card up to 128GB
Audio	Line-out, 3.5mm Jack Line-in, 3.5mm Jack Speaker, 2 x 3W, 4Pin-PH1.25 Mic input, 2Pin-PH 1.25	Speaker: 10 speaker total 10W x 2 Stereo 3W x 2 Stereo 3W x 2 Stereo 3W x 2 Stereo	HDMI audio out
Interface	2 x UART/RS232 or 1 x UART/RS232 1 x UART/RS232/RS485 Key Interface (PWR/ADC/Reset/GND) 1 x DI 2 x DO 1 x CAN 1 x RS232 1 x RS485 (2*9Pin Phoenix fixing) 4lane Mipi-CSI camera interface UART/i2C/SPI/PCMC/PWM	2 x RS485 for motor control key interface	4-lane mipi Camera, 5MP@30fps HDR UART/USB/ADC/KEY/VBAT via 40Pin-FPC
Input Power	12V DC via DC5.5 connector 12V DC via 2Pin-5.08mm Flange fixing	DC-12V via 8pin-PH2.54	VBAT 3.8V via 40Pin-FPC
PCB	Size: 85 x 138 x 1.6mm Process: 8-layer Immersion Gold Hole: $\varnothing$ 3.2mm x 4	Size: 180 x 180 x 1.6mm Process: 4-layer Immersion Gold	Size: 95 x 84 x 1.0mm Process: 6-layer HDI Immersion Gold Package: LCC134
Environment	Operating temperature -20°C ~ 60°C	Operating temperature -20°C ~ 60°C	Operating temperature -20°C ~ 60°C

**pretech**  
ENRICH YOUR LIFE



Website



Catalog

## CONTACT US

Address: 808, 8F, Qiancheng Commercial Center, 5 Haicheng Road, Bao'an District, Shenzhen 518102, China

Mobile: +86 186 6682 0322

Email: admin@pretech-e.com

Web: www.pretech-e.com